

TSUNAMI EVACUATION MAP

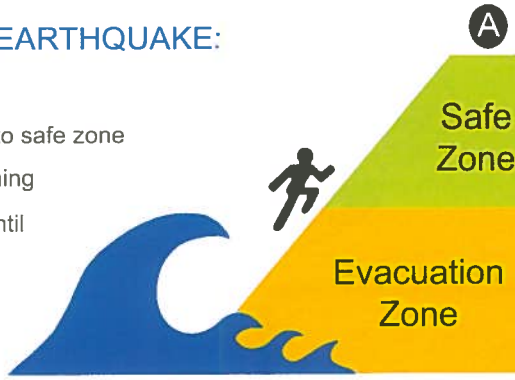
PAGO BAY, GUAM



IF YOU FEEL A STRONG EARTHQUAKE:

- Drop, Cover, and Hold On
- When the shaking stops, move to safe zone
- DO NOT wait for an official warning
- Stay away from coastal areas until officials issue an "all clear"

A local tsunami can arrive in 15 to 20 minutes!



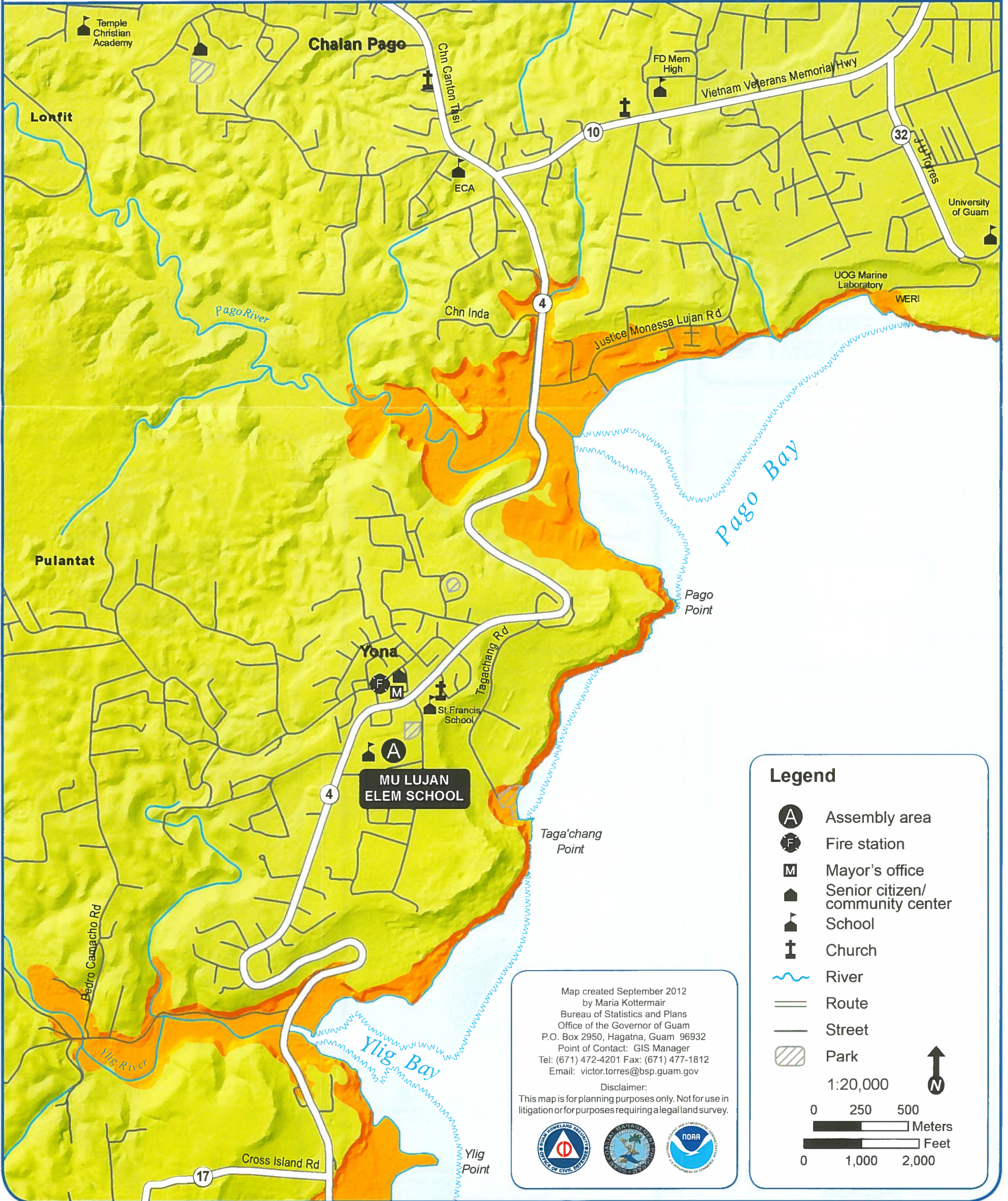
A Assembly Area or Safe Ground

Safe Zone

Proceed to this area for all tsunami warnings or if you feel a strong earthquake.

Evacuation Zone

Evacuate from this area for all tsunami warnings or if you feel a strong earthquake. Move inland and to higher ground or proceed to the 3rd floor or higher of a tall reinforced concrete building.



Legend

- A** Assembly area
- F** Fire station
- M** Mayor's office
- House icon Senior citizen/ community center
- School icon School
- Church icon Church
- Wavy line River
- Double line Route
- Single line Street
- Hatched box Park

1:20,000

0 250 500 Meters

0 1,000 2,000 Feet

North arrow pointing up

Map created September 2012 by Maria Kottermair
 Bureau of Statistics and Plans
 Office of the Governor of Guam
 P.O. Box 2950, Hagatna, Guam 96932
 Point of Contact: GIS Manager
 Tel: (671) 472-4201 Fax: (671) 477-1812
 Email: victor.torres@bsp.guam.gov

Disclaimer:
 This map is for planning purposes only. Not for use in litigation or for purposes requiring a legal land survey.